



Site Evaluations 2022-2023 School Year

Presentation to SPCSA Board

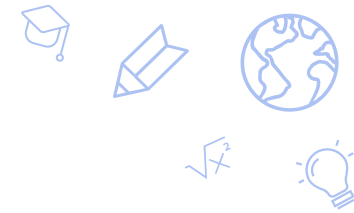
June 23, 2023





Overview

- Review of Site Evaluation Requirements, Purpose, and Focus
- SE Data for the 2022-2023 School-Year
- Strengths
- Challenges
- Moving Forward



Site Evaluation Requirements

- NRS 388A.223 outlines the responsibilities of the State Public Charter School Authority, including the legal requirement to conduct site evaluations of each campus of a charter school it sponsors during the first, third and fifth years after entering into or renewing a charter contract. The SPCSA site evaluation team provides clear details regarding each phase of the process to school leaders in hopes that a smooth and meaningful site evaluation will take place.
- Additionally, the SPCSA maintains open lines of communication with our Charter School leaders and supports them in having all information and a full understanding of the process.

Comprehensive (Years 1, 3, 5)

- Year 1
 - Full Site Evaluation
- Year 3
 - Full Site Evaluation;
Abbreviated for 4 - and 5 - Star schools
- Year 3
 - Full Site Evaluation

Targeted Site Evaluation* (Years 2, 4, 6)

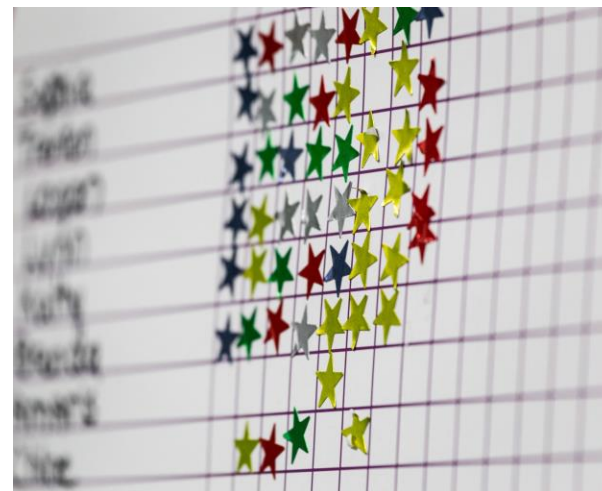
- Previous Deficiency or Strong Recommendation
- 1- or 2-Star
- Operating under an academic or organizational notice

*As part of our ongoing monitoring and oversight efforts, SPCSA staff will request interim and mid-year assessment data for schools that do not have an NSPF star rating in order to understand the schools' current academic performance levels. Every year, a targeted review of academic results will be conducted. Reviewing academic results might trigger a targeted site evaluation.



Site Evaluation Purpose

- The SPCSA site evaluations serve multiple purposes, including gathering quantitative and qualitative data to monitor the academic and organizational performance of SPCSA schools. These evaluations also document progress towards the goals outlined in the schools' charters and ensure accountability as a state-authorized public school.





Site Evaluation Focus

- The site evaluations focus on assessing academic performance, organizational effectiveness, and adherence to the approved charter and charter contract with the SPCSA. They are not intended for critiquing the school model, providing micromanagement opportunities, or evaluating teacher performance.
- Instead, site evaluations provide an opportunity to triangulate reports and data with qualitative information, build or strengthen relationships with schools, offer an outside perspective, and provide objective suggestions for best practices to fulfill the charter contract and meet the needs of all students. They also help review the alignment between implementation and the charter contract.



Site Evaluation Experience



The SPCSA aims to provide a high-quality site evaluation experience by:

- Utilizing effective communication
- Providing meaningful feedback
- Building strong relationships with stakeholders



SPCSA strives to meet each of these by weaving in the three expectations through each step of the site evaluation process; pre- site evaluation, during the site evaluation, and post site evaluation.



2022-2023 School Year



2022-2023 Site Evaluation Data

- All schools with a charter contract in years 1, 3, or 5 were evaluated as scheduled. Follow-up site evaluations are conducted for schools with strong recommendations and/or deficiency.
- A total of **57** Site Evaluations were conducted during this school year.
- A total of **1,288** classrooms were observed.
- An average of **22** classroom observations per school.
- Evaluations took place between September 2022 and April 2023.
- Available reports are on the SPCSA website for public access. For more information, please visit <https://charterschools.nv.gov>



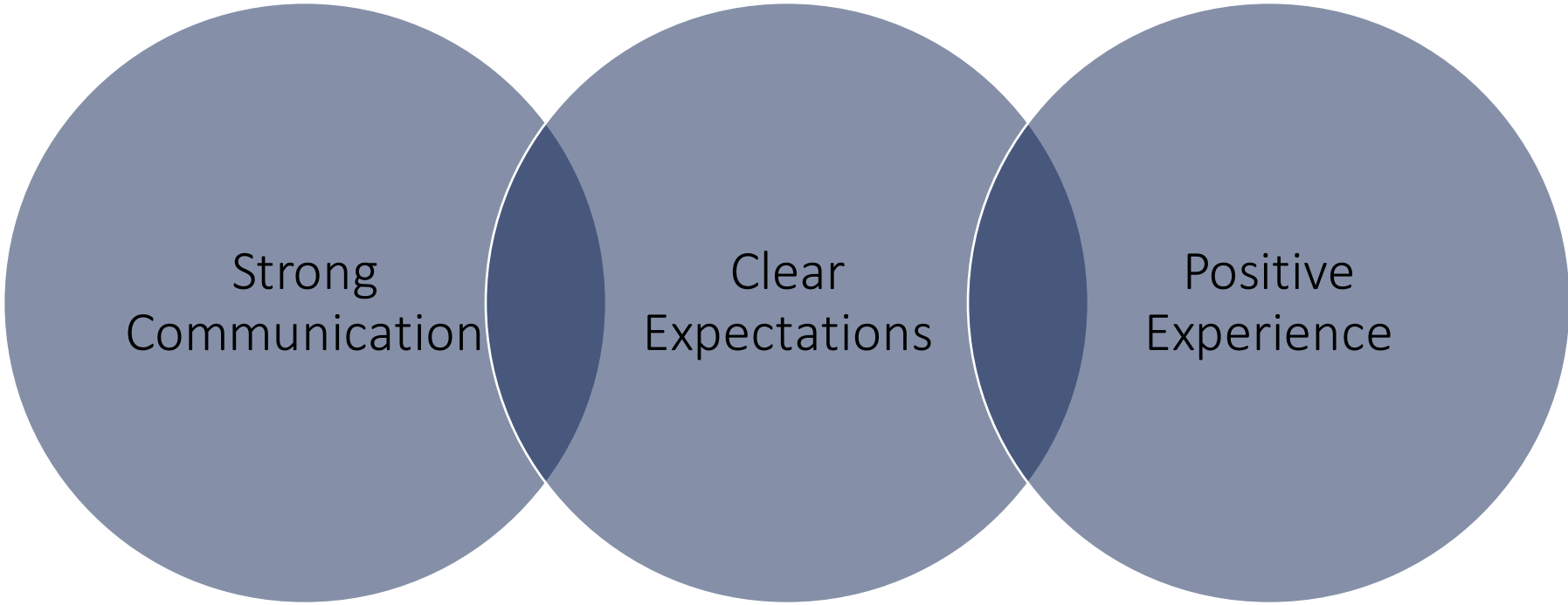
2022-2023 Site Evaluation Feedback

Survey Data Trends



- After conducting the site evaluations and finalizing the site evaluation reports, school leaders receive a short survey.
- The survey consists of 4 questions- two Likert scale and two open-ended questions.
- School leaders have 14 days to complete the survey.
- Several reminders are sent to school leaders.
- We utilize the survey data to inform revisions to the SPCSA's site evaluation process.

2022-2023 Site Evaluation Feedback Survey Data Trends



2022-2023 Site Evaluation Feedback

Survey Data Cont'd



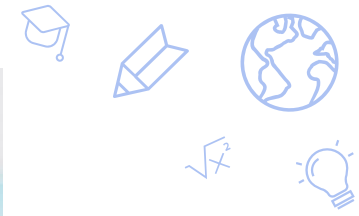
"I like the pre-conference before the site evaluation so that our team knows what is expected during the visit."

"Great to have a fresh perspective regarding highlights and areas of improvement. The process was validated for both."

"The way the visit was organized, including the agenda planning, the schedule, and feedback was fantastic! The staff was very professional."

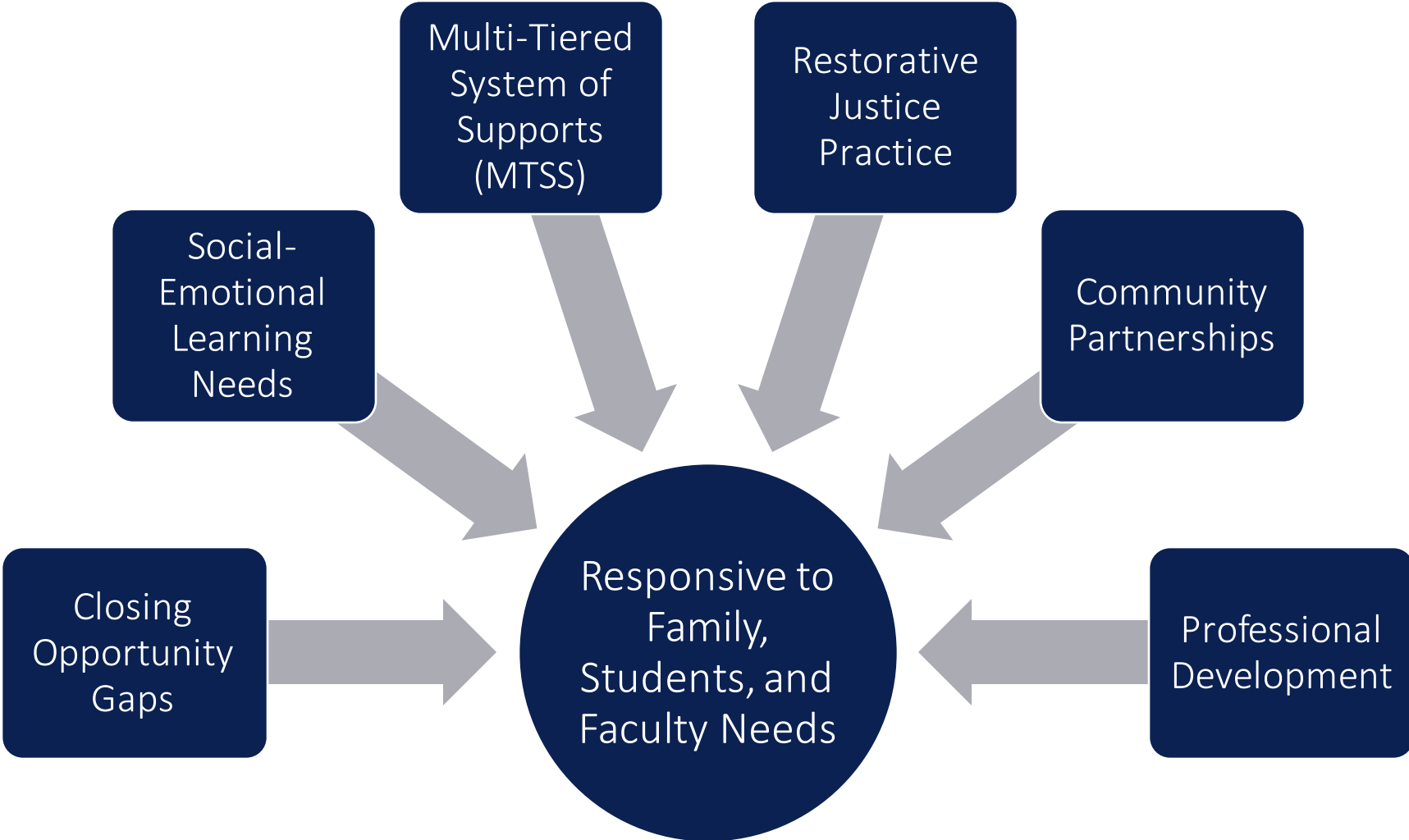
"The team set clear expectations and it went exactly as planned."

"The site evaluation team was very communicative and helpful throughout the process."

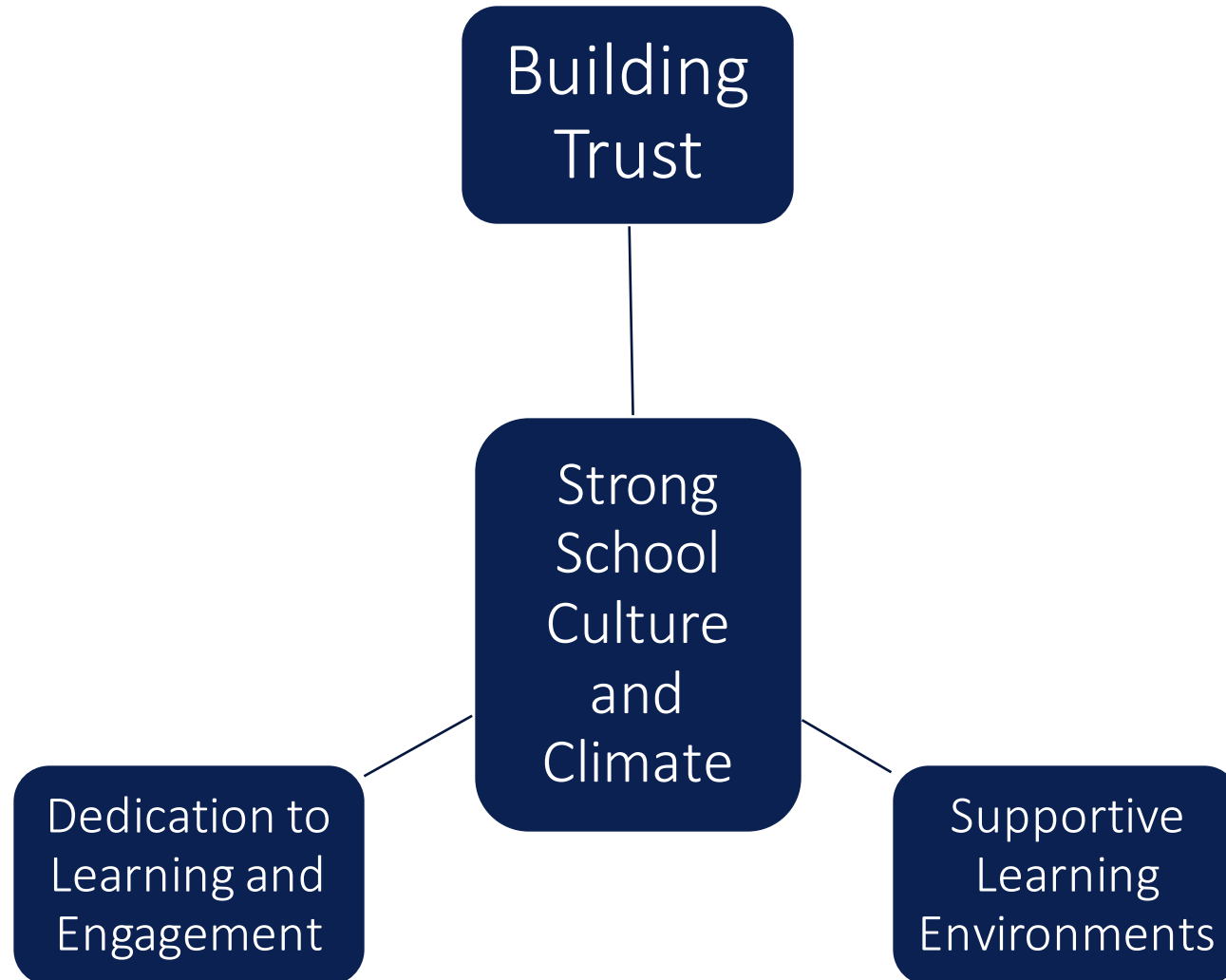


Strengths, Challenges, Moving Forward

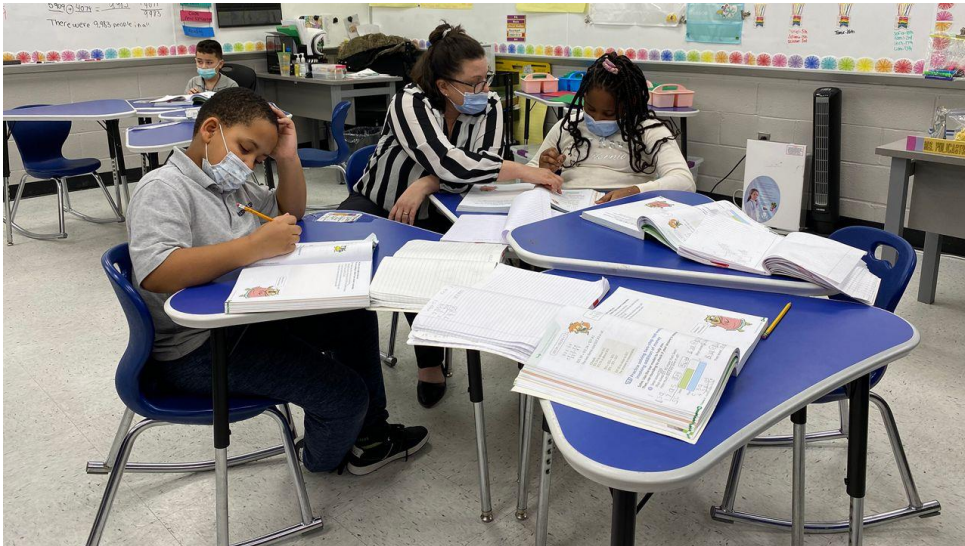
Strength: Strong Leadership



Strength: School Culture and Climate



Challenges



- Schools continue to address:
 - Student enrollment
 - Increasing diversity of students with an IEP, EL, or students receiving free or reduced-priced-lunch.
 - Chronic absenteeism
 - Opportunity gaps
 - Regressive social-emotional skills
 - Challenging behaviors
 - Teacher shortages
 - Needs of vulnerable student groups

Moving Forward

The site evaluation team will review information from the SE feedback surveys, anecdotal notes, and data collected from the site evaluations to consider changes to improve the site evaluation process further.

The team is excited to improve our practice of conducting site evaluations this coming school year.

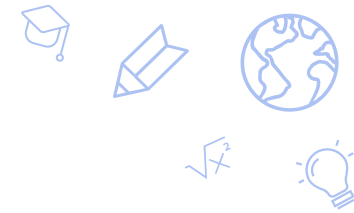
The site evaluation team is currently working on next year's site evaluation schedule, revising the handbook, and reviewing forms. The board will receive the site evaluation schedule for the 2023-24 school year when it is finalized. The site evaluation team plans to engage with stakeholders including school leaders to inform proposed changes and revisions to the site evaluation process and handbook.



Thank you!

charterschools.nv.gov





Appendix A

- Survey Questions
 - The overall site evaluation process from beginning to end was _____.
 - The site evaluation report provided me with insightful information.
 - What worked well for you/your school team during the site evaluation?
 - I would like to make the following recommendations to improve the site evaluation experience from my perspective.

Appendix B



First Semester Site Evaluations

- Freedom Classical
- Quest Academy
- Founders Classical Academy of LV
- NCA
- Honors Academy of Lit
- PANN
- LANV
- Explore
- Democracy Prep
- Sports Leadership and Management (SLAM)
- Nevada Rise
- GEMS
- Young Women's Leadership Academy
- Battle Born Academy
- Strong Start Academy
- Amplus Durango
- Amplus Rainbow
- Coral Academy Cadence
- Beacon Academy East
- Beacon Academy West
- Futuro Academy
- Sage Collegiate
- Pilot Ed

Second Semester Site Evaluations

- Somerset Aliante
- Somerset Losee
- Somerset North Las Vegas
- Somerset Lone Mountain
- Somerset Sky Pointe
- Somerset Skye Canyon
- Somerset Stephanie
- Mater Mt. Vista
- Mater East LV
- Mater Bonanza
- Discovery Sandhill
- Nevada Prep
- Coral Academy Nellis
- CIVICA
- Signature Preparatory
- Legacy Traditional School Southwest
- Legacy Traditional School Cadence
- Legacy Traditional School North Valley
- Pinecrest Horizon
- Pinecrest Virtual
- Pinecrest Cadence
- Pinecrest Inspirada
- Pinecrest St. Rose
- Pinecrest Sloan
- NSHS Downtown
- NSHS Meadowwood
- NSHS North Las Vegas
- NSHS Las Vegas Summerlin
- NSHS Northwest
- NSHS Henderson
- NSHS Henderson
- NSHS Sunrise
- NSHS Southwest
- Learning Bridge